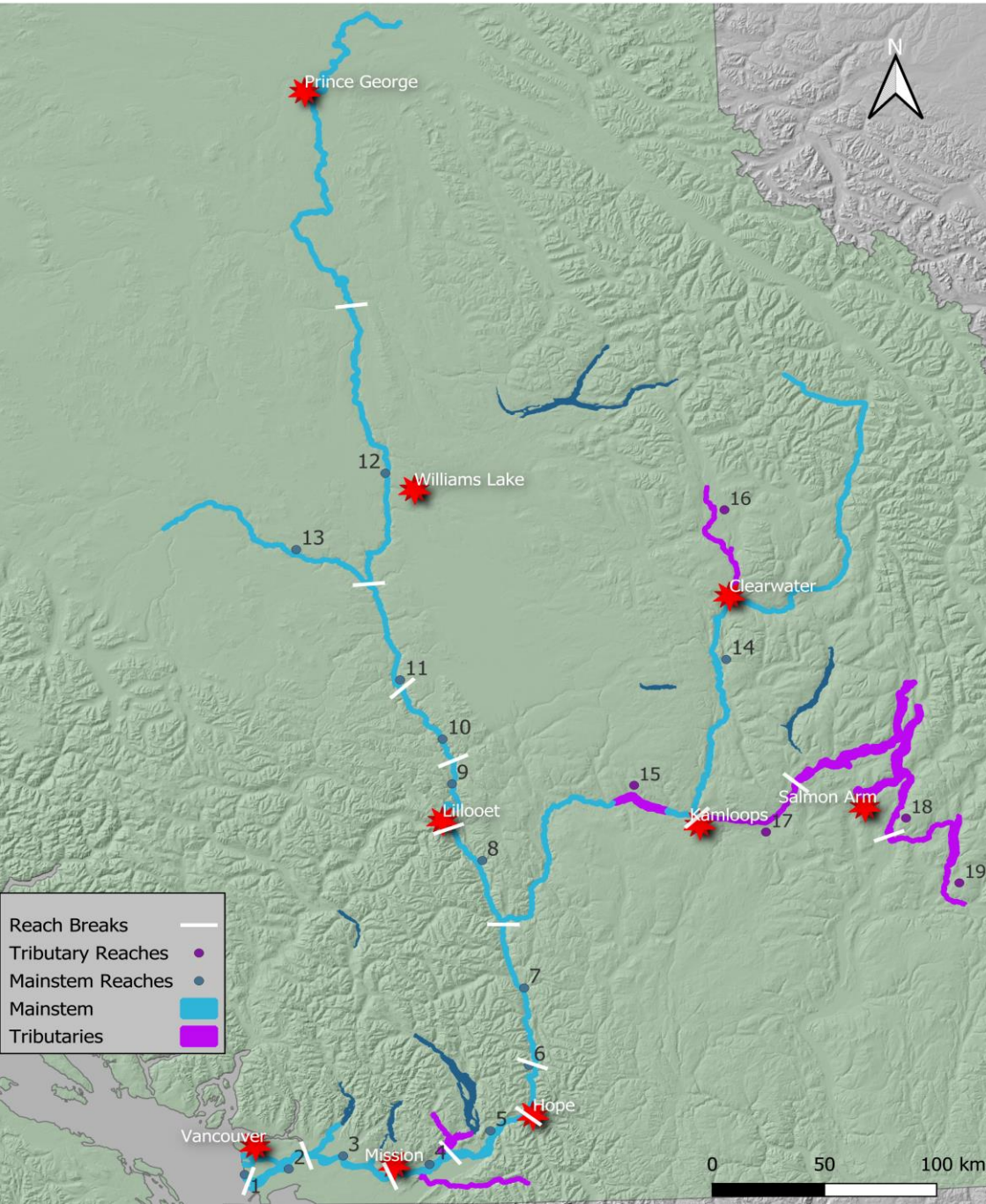




# Fraser River Food, Social and Ceremonial (FSC)

All catch monitoring programs in the Fraser River are conducted collaboratively with First Nations local to the area monitored

# Fraser River and Tributary Reaches



## Fishery Reach Breaks

### Fraser Mainstem

1. A29
2. Steveston - Port Mann Bridge
3. Port Mann Bridge - Mission
4. Mission - Harrison
5. Harrison - Hope
6. Hope - Sawmill
7. Sawmill - Thompson
8. Thompson - Texas
9. Texas - Kelly
10. Kelly - Deadman
11. Deadman - Chilcotin
12. Chilcotin - Quesnel
13. Chilcotin
14. North Thompson

### Tributaries

15. Kamloops Lake
16. Clearwater
17. South Thompson
18. Middle Shuswap
19. Lower Shuswap + Mabel Lake



# Types of Programs

- **Census** – total catch and total effort is collected through contact with all fishers active in the fishery
- **Survey** – total catch and total effort is calculated based on surveys with a portion of the fishers active in the fishery; these programs expand the catch per unit effort based on a peak effort count during the fishery



# Who collects the Data

Data is collected and shared by:

- First Nations Catch Monitors and Aboriginal Fisheries Officers (AFOs),
- DFO Catch Monitoring Program Staff,
- DFO contracted observers (Lower Fraser)
- DFO Conservation and Protection Officers



# How and What data is collected - Census

- Gill nets, Dip nets
  - Roving Boat, vehicle, foot and phone
  - Catch Interviews (kept/released, bycatch)
  - Biological sampling
  - Fish health (Mid and Upper Fraser)
- Beach Seine and Shallow Seine
  - Monitors assigned to each seine crew
  - Counts of all catch (kept/released, bycatch)
  - Biological sampling







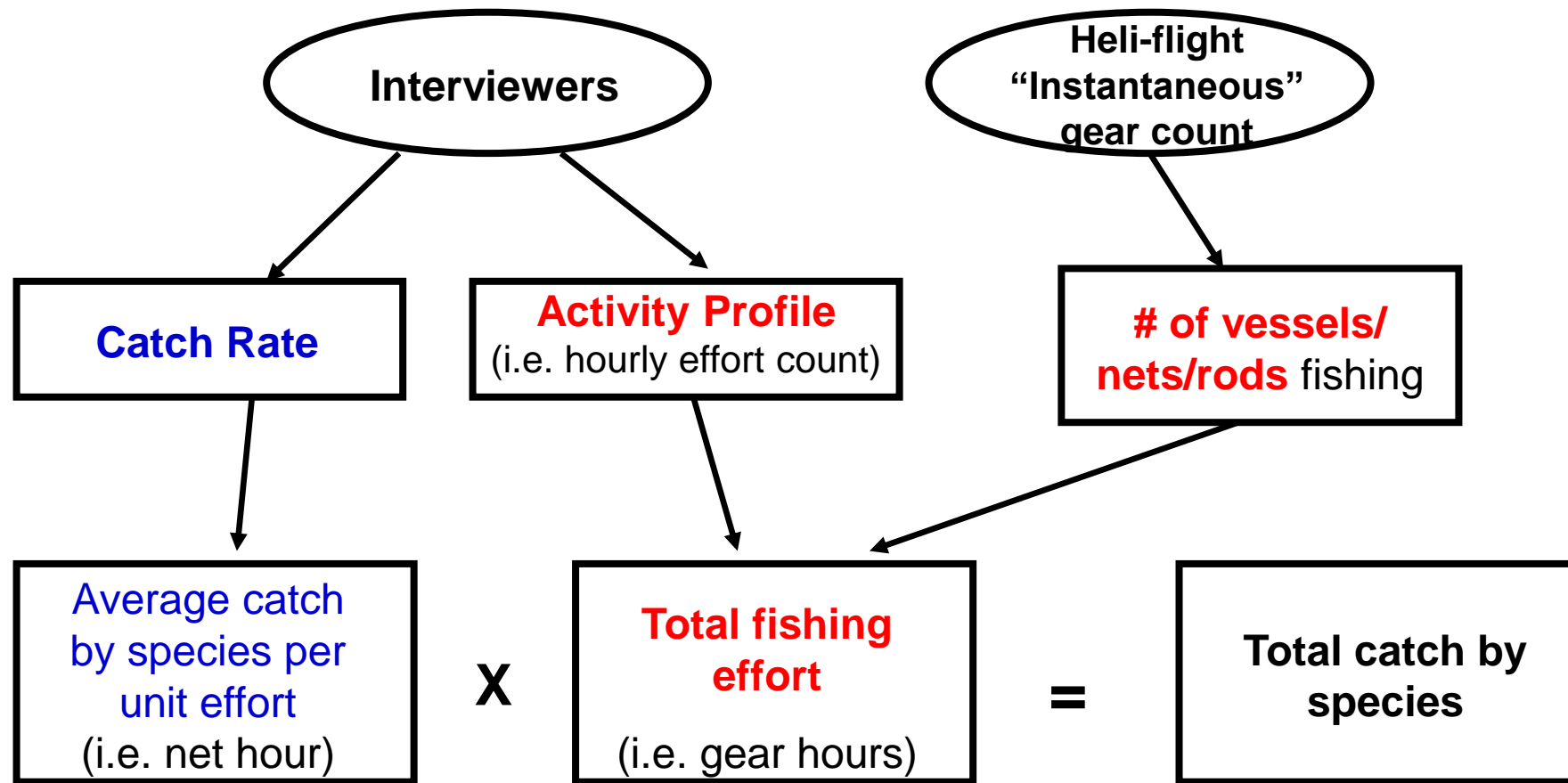
# How and What data is collected - Survey

- Roving boat, vehicle, foot and phone
  - Set Net, Rod and Reel
  - Catch Interviews (kept/released, bycatch)
  - Spiral Effort Counts (collected each hour, over a 12-hour period)
  - Biological sampling
  - Fish health (Mid and Upper Fraser)
- Helicopter
  - Instantaneous Effort Counts (collected in a short period of time, i.e., <2 hours)





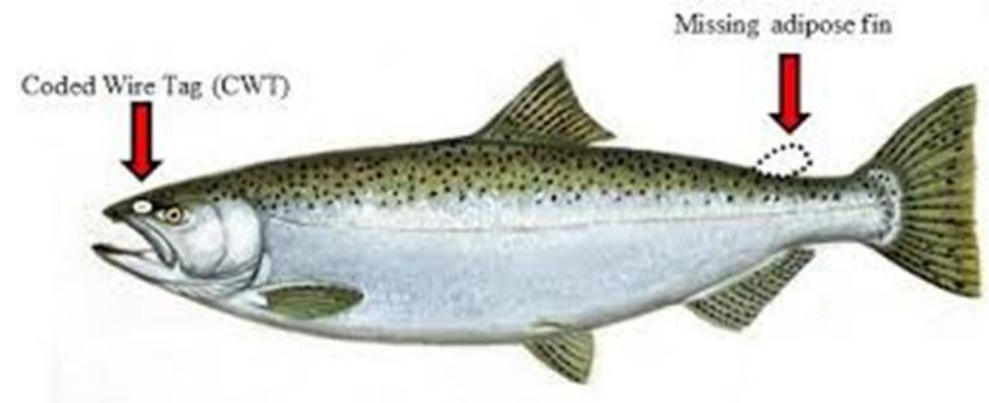
# Calculation Summary





# Salmon Head Recovery Program

- Coded-wire tags provide valuable information about Abundance, Distribution and Survival.
- Provides information for planning of next year's fishing season.
- Run timing in salt and freshwater areas.
- Provides data for Chinook and Coho management.
- First Nations fisher participation.







# Fish health and environmental condition data

Monitoring fish health and environmental conditions:

- Environmental Conditions
  - Water temperatures
  - Water levels (anecdotal)
  - Debris/Turbidity (anecdotal)
- Inspecting catch for fish health and condition
- Sampling of catch, moribund and dead
- Migration/holding observations
- Noting fisher comments regarding conditions



## Other Benefits of the Program

- Ghost Net recovery
  - Removing unattended nets often with rotting fish
- Assistance to First Responders (Mid-Fraser)





# Schedules and Reporting

Catch is reported by:

- Management Unit
- Week
- Species
- Kept/Released
- Sanctioned/Other



# Schedules and Reporting

## Typical schedule for estimates:

- April to July – Schedule development for monitors, boat and heli patrols
  - For Survey Programs - A balance of randomness, area coverage, and resources
  - Upstream of Sawmill Creek is monitored regardless of if there is an opening
- Data collected each week (maximum Monday to Sunday estimation period)
- Data is submitted on Monday morning for the previous week
- In-season estimates generated for EOD Tuesday (for FRP in-season decisions)
  - Estimate is further reviewed and updated with any late received information for Thursday
- Preliminary post season estimate Late November/Early December
  - Incorporates late received information; verify event influences (e.g., fire alerts/orders)
- Final estimate mid-January (Chinook and Sockeye), mid-February (Coho)



# Challenges

- Fisher dependent data – releases  
(except selective gear where monitor is present)
- CWT sampling rates (when CN or CO retention is permitted)





# Thanks for listening!

For more information contact us:

- **Karen Burnett, Resource Management Biologist** (Downstream of Sawmill Creek)  
Fraser and Interior Area  
[Karen.Burnett@dfo-mpo.gc.ca](mailto:Karen.Burnett@dfo-mpo.gc.ca)
- **Trish House, Resource Management Biologist** (Upstream of Sawmill Creek)  
Fraser and Interior Area  
[Patricia.House@dfo-mpo.gc.ca](mailto:Patricia.House@dfo-mpo.gc.ca)