

Joint Technical Working Group

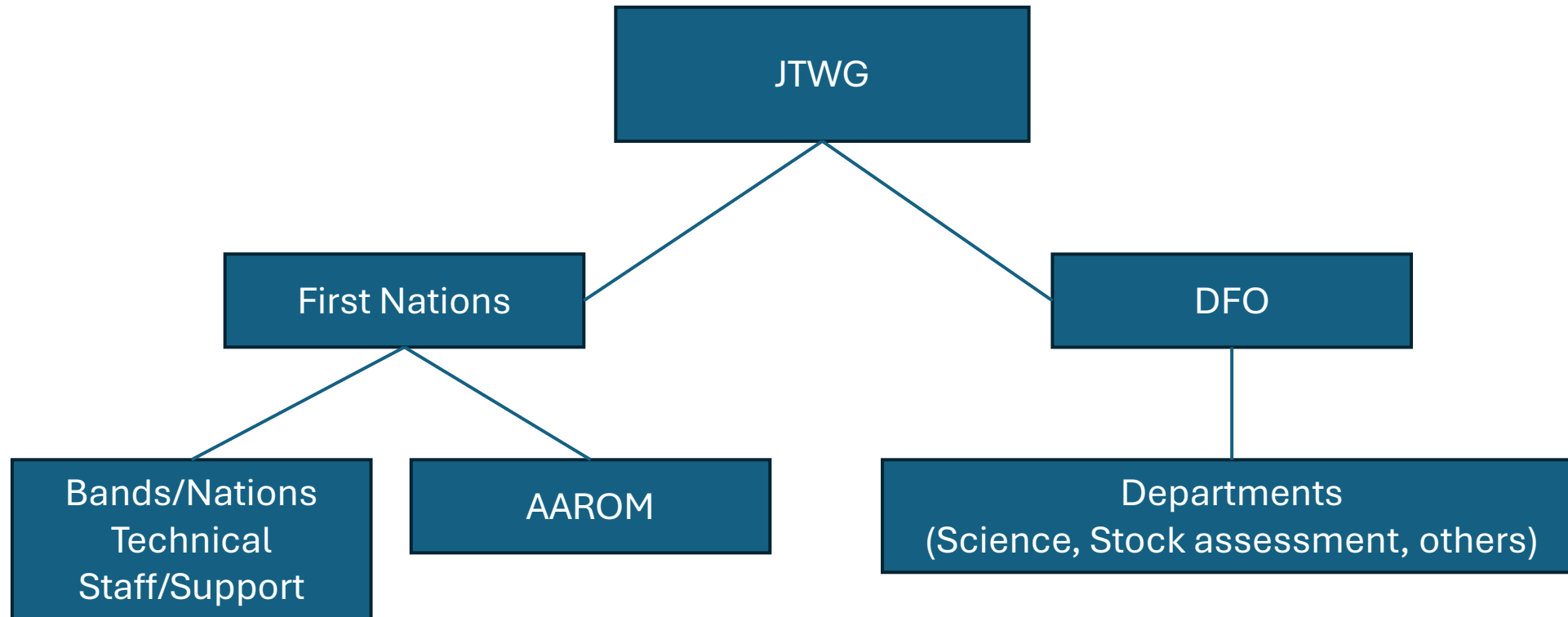
February 25, 2025

Kelsey Campbell – FSMC, UFFCA (krcampbell@telus.net)

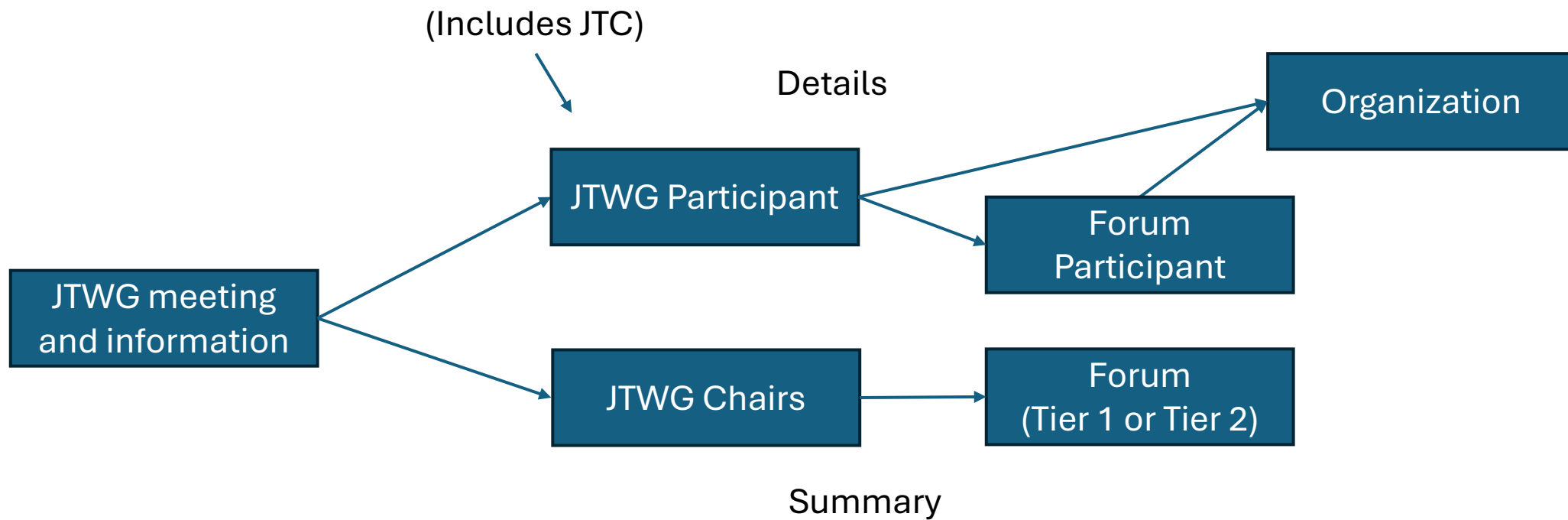
Colin Schwindt – DFO (colin.schwindt@dfo-mpo.gc.ca)

Structure

Primarily Tier 2
Not consultative
Not mandated
Open forum for technical discussions



Pathway for communication



Outline

1. Adoption of the 2025/26 TOR

2. Wrap up on 2024 Fraser Sockeye Escapements

3. FSAR and Climate Change

4. Chilcotin Landslide

5. Sockeye and Pink Forecast

6. Chinook Summer 5(2) Tech Memo

7. Rapid Status Assessment Tool

1. JTWG ToR

- Finalized but still areas for discussion for longer-term
 - Challenges noted: Ambiguity around purpose, consultation role and scope
 - Through Forum Renewal and JTWG/JTC – draw linkages to JTWG, JTC, PST, AAROMs and other bodies more clearly – map out.

2. Sockeye Preliminary Escapement – presented by Colin Schwindt, DFO

- Summer run and Late run preliminary spawning escapement
- Provided updates on predicted (Mission – upstream catch – MA) vs observed spawning ground escapements estimates
- Spawning escapements exceeded expectations for all MUs
 - Early Summers and Lates exceeded end-of-season run size
 - Potential sources of in-season assessment errors
 - Underestimating run-size
 - Over prediction of en-route loss.
 - Finalization occurs via the Run Size Adjustment (RSA process in May)

3. Fishery Science Advisory Report Process – Presented by Ann-Marie Huang, DFO

“Development of template for delivering stock assessment”

- **Fish Stock Provisions:** Progress update on implementation of FSP approaches to implement the Precautionary Approach and drive the initiation of Rebuilding Plans for depressed stocks.
- **FSAR/FSRR:** New Fisheries Science Advisory Report/Fisheries Science Response Report templates for providing stock assessments on a more timely and predictable schedule.
- **Tools:** Salmon Scanner/Rapid Status Algorithm; Rebuilding Plans.
- Proposed expanded approach that considers stock assessment, ecosystem assessment and climate vulnerability assessments together to provide a more complete and holistic picture.
- Sprint Week: New process to aid development and review of more timely assessments.

3. Fishery Science Advisory Report Process – Presented by Ann-Marie Huang, DFO

Discussion

- Purpose of this work & new tools, how to ensure the potential is widely understood.
- Clarifying ways to engage First Nations meaningfully, having First Nations values and priorities drive planning.
- Need to better integrate and coordinate multiple concurrent efforts and initiatives.
- Value of multilateral governance tables that include the Province, e.g. Nicola process.
- Many questions:
 - Who defines rebuilding/rebuilding plan requirements?
 - Funding to implement?
 - Socio and economic piece happens outside of the FSAR – how to reflect First Nations values?

4. Chilcotin Landslide – presented by Pete Nicklin, TNG Fisheries

- Overview of immediate, longer-term impacts, the comprehensive response and ongoing risks
- Implications for 2025 and question posed of how to work together

Discussion

- FNs well placed to lead coordinated response with multiple partners — need to be prepared to do so, especially in a context of more frequent extreme events.
- How best to work together to ensure appropriate in-season management.
 - Chilko are forecasted to make up the majority of the 2025 return and harvestable surplus
 - Some of the key time periods of particular interest are the freeze-thaw periods and spring freshet – March through July

5. Fraser Sockeye and Pink Forecast 2025 – Kaitlyn Dionne, DFO

- Highlighted the importance of updating modeling inputs/procedures to account for increased variability
- For sockeye returning in 2025, ocean conditions are mixed – offshore conditions appear favorable but near shore appear slightly below average
- Chilko contributing bulk forecast - highest range among top performing models
- If pinks return at forecast, will be highest on return on record.

Discussion

- Very high pink harvestable surplus expected, with constraints due to co-migrating stocks (Late Run sockeye, IFC, IF Steelhead).
 - In season assessment challenges, market, processing capacity challenges
 - Assessing sockeye among millions of pinks will become very challenging when species overlap.

6. Sockeye and Pink Escapement Planning – presented by Aidan Fisher and Colin Schwindt

- Overview of 2 options developed through the JTC process and included in the draft IFMP.
- Extensive work on a potential Option 3 (not included in draft IFMP).

Discussion

- Strong FN interest in exploring Option 3 further for 2025, proposal to include a summary at Forum Day 1, followed by discussion in Tier 1.
- Significant technical work needed to evaluate the current approaches for sockeye escapement development, and a continued interest in exploring alternatives to address MU and stock-specific concerns.
- DFO to share the current escapement planning workbook and tutorial for exploring escapement plan scenarios and various evaluation processes

7. Summer 5(2) Chinook Technical Memo – presented by **Brittany Jenewein DFO**

- Available online
- FSMB wants feedback on all scenarios, not just preferred ones

Discussion

- Request info on current in-river distribution of impacts (FSMB has not yet explored how to operationalize a redistribution of impacts).
- CTC memo/lrec data will be considered in next FMI report (not included in this work).
- Proposal to review circle back post final IFMP to understand how decisions were made via the evaluation framework to close the loop.

8. Rapid Status Assessment – Presented by Kaitlyn Dionne, DFO.

- **WSP Rapid Status Assessment tool**
- New algorithm designed to permit rapid annual status assessments to red flag potential problems/changes vs waiting many years for WSP integrated assessments.
- Accompanying documentation to provide additional context along with algorithm results.
- Some First Nations technical reps are engaged in the assessment process
- Results will be shared with First Nations for additional comments/edits, then to State of the Salmon program for reporting.
- Also used as the foundation in identifying if a stock is below the LRP.

Thank you!